



अनुसया शिक्षण प्रसारक मंडळ गोजेगांव द्वारा संचलित

स्वामी विवेकानंद महाविद्यालय,  
मुकुरामाबाद ता. मुखेड,  
जिल्हा. नांदेड (महाराष्ट्र)

SWAMI VIVEKANAND MAHAVIDYALAYA,  
MUKRAMABAD Tq. MUKHED,  
Dist.NANDED. (MAHARASHTRA)

संलग्नीत स्वामी रामानंद तीर्थ मराठवाडा विद्यापीठ, नांदेड

Off. No. (02461) 267009 /9766888872

E-mail :- svcollegembad@yahoo.in

College Code :- 152

swamivm152@gmail.com

Website:- swamivivekanandmahavidyalaya.com

संस्थापक

व्यंकटरावजी पाटील गोजेगावकर

9422171152

प्राचार्य

डॉ. विवेक गंगाधरराव ईनामदार

9422171639

## “Policy Documents for Environment Audit”

### Introduction:

An environmental audit is a comprehensive assessment activity of the college. The purpose of an environmental audit is to evaluate an organization's environmental performance, identify areas for improvement, and ensure compliance with environmental regulations and standards. Environmental audits conducted by internal or external auditors, and may focus on various aspects of the college's activities, such as energy use, waste management, water consumption, and air quality. The findings of an environmental audit help the college to identify areas where they help to reduce their environmental impact, improve their environmental performance, and comply with environmental regulations and standards.

Environmental audits are becoming increasingly important in today's world, where environmental issues such as climate change, pollution, and depletion of natural resources are of growing concern. The college has a responsibility to minimize their environmental impact and contribute to sustainable development, and environmental audits help them to achieve these goals.

An environmental audit is an important tool for organizations to evaluate and improve their environmental performance. By identifying areas for improvement and implementing strategies to reduce their environmental impact, the college contributes for the more sustainable future.

### Aims and Objectives of Environment Audit in the College:

The primary aim of an environmental audit in higher education is to evaluate the environmental impact of an institution's activities and facilities, identify areas for

PRINCIPAL

Swami Vivekanand Mahavidyalaya  
Mukramabad Tq. Mukhed. Dist. Nanded



improvement, and develop strategies to reduce the institution's environmental impact. An environmental audit in higher education is conducted with the following objectives:

- a. **To Assess the Environmental Impact of the College's Activities and Facilities:** The audit evaluates the college's energy use, waste management practices, water consumption, air quality, and other environmental factors.
- b. **To Identify Areas for Improvement:** The audit identifies areas where the college reduces its environmental impact and improve its environmental performance, such as by reducing energy consumption, improving waste management practices, or implementing sustainable transportation options.
- c. **To Develop Strategies for the Improvement:** The audit provides recommendations for strategies to improve the college's environmental performance, such as by implementing renewable energy sources, improving building design and construction, or developing sustainable transportation plans.
- d. **To Ensure Compliance with Environmental Regulations and Standards:** The audit ensures that the college complies with applicable environmental regulations and standards, such as those related to air quality, water quality, and waste management.
- e. **To Promote Environmental Awareness and Education:** The audit raises awareness among students, faculty and staff about the importance of environmental sustainability and the role that the college plays in promoting it.

Thus, the college aim of an environmental audit is to promote sustainability and environmental stewardship by evaluating the college's environmental impact, identifying areas for improvement and developing strategies to reduce that impact.

**Energy Record of the College:**

Consumer No.568290002652 BU-2488-Degloor DPC CODE 4449858

Sr. No.	Electricity Bill	2017-2018												TOTAL
		April-17	May-17	Jun-17	Jul-17	Aug-17	Sep-17	Oct-17	Nov-17	Dec-17	Jan-18	Feb-18	Mar-18	
1	2	3	4	5	6	7	8	9	10	11	12	13	14	15
1	Units	184	89	175	84	81	97	81	86	162	93	91	119	1340
2	Net Bill Amount	2667	1435	5353	6675	2967	2663	1481	2236	6530	2964	5692	2281	42944

Name of the College :- Swami Vivekanand Mahavidyalaya , Mukramabad Tq. Mukhed Dist.Nanded

Consumer No.568290002652 BU-2488-Degloor DPC CODE 4449858

Sr. No.	Electricity Bill	2018-2019												TOTAL
		April-18	May-18	Jun-18	Jul-18	Aug-18	Sep-18	Oct-19	Nov-18	Dec-18	Jan-19	Feb-19	Mar-19	
1	2	3	4	5	6	7	8	9	10	11	12	13	14	15
1	Units	74	78	75	77	91	94	81	86	119	65	79	93	1012
2	Net Bill Amount	3266	4902	3861	2966	5692	4082	1481	2236	2281	1373	4902	2964	40006

Name of the College :- Swami Vivekanand Mahavidyalaya , Mukramabad Tq. Mukhed Dist.Nanded

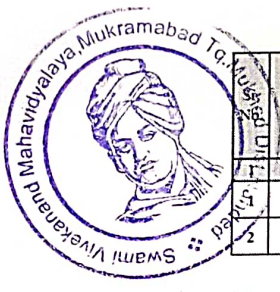
Consumer No.568290002652 BU-2488-Degloor DPC CODE 4449858

Sr. No.	Electricity Bill	2019-2020												TOTAL
		April-19	May-19	Jun-19	Jul-19	Aug-19	Sep-19	Oct-19	Nov-19	Dec-19	Jan-20	Feb-20	Mar-20	
1	2	3	4	5	6	7	8	9	10	11	12	13	14	15
1	Units	184	94	173	84	84	97	75	6	162	93	90	79	1221
2	Net Bill Amount	2667	4082	5353	6675	1289	2663	3861	4407	6530	2964	4376	1291	46158

Name of the College :- Swami Vivekanand Mahavidyalaya , Mukramabad Tq. Mukhed Dist.Nanded

Consumer No.568290002652 BU-2488-Degloor DPC CODE 4449858

**PRINCIPAL**  
Swami Vivekanand Mahavidyalaya  
Mukramabad Tq. Mukhed. Dist. Nanded



Electricity Bill	2020-2021												TOTAL
	April-20	May-20	Jun-20	Jul-20	Aug-20	Sep-20	Oct-20	Nov-20	Dec-20	Jan-21	Feb-21	Mar-21	
2	3	4	5	6	7	8	9	10	11	12	13	14	15
Units	0	0	0	0	0	0	0	0	0	0	89	51	140
Net Bill Amount	3.81	3.81	3.81	3.81	3.81	3.81	3.81	3.81	3.81	3.81	1435	1044	2517.1

Name of the College :- Swami Vivekanand Mahavidyalaya , Mukramabad Tq. Mukhed Dist.Nanded  
 Consumer No.568290002652 BU-2488-Degloor DPC CODE 4449S58


Sr. No.	Electricity Bill	2021-2022												TOTAL
		April-21	May-21	Jun-21	Jul-21	Aug-21	Sep-21	Oct-21	Nov-21	Dec-21	Jan-22	Feb-22	Mar-22	
1	2	3	4	5	6	7	8	9	10	11	12	13	14	15
1	Units	52	74	194	78	91	174	81	86	81	65	119	77	1172
2	Net Bill Amount	2570	3266	4179	4902	5692	750	1481	2236	2967	1373	2281	2996	34693

### Details of Electrical particulars working in the campus

Sr. No.	Name of Particulars	Total No
01	Total No. of Electrical fans	50
02	Exhaust fans	0
03	Air Conditioner	0
04	Total No. of Tubes	0
05	Total No. of LED lamps	32
06	Total No. of LED Tubes	35
07	Street Light	05
08	Total No. of CFL lamps	
09	Total No. of Sockets	350
10	Water Motors	02 HP x 01
11	RO Motors	01 KW x 01
10	Water Cooler	01
11	No. of Computer	25
12	Printers	05
13	Xerox Machine	03
14	Inverters	02
15	LCD TV	01
16	Smart Board	00
17	LCD Projectors	02

  
**PRINCIPAL**  
 Swami Vivekanand Mahavidyalaya  
 Mukramabad Tq. Mukhed. Dist. Nanded

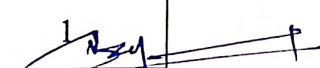
Green Audit Record of the College:



Sr. No.	Description of area for particulars	Area occupied for particulars in meters ( in Sq.m. )
01	Swami Vivekanand Mahavidyalaya, Mukramabad, Tq. Mukhed Dist. Nanded. Total Campus area	13759.31 sq.m
02	Built up area	2014.32 sq.m
03	Total Open space	12752.15 sq.m
04	Total Play Ground	11741.15 sq.m
05	Total Plantation covered	1011 sq.m
	<b>Total Green covered in college campus</b>	<b>1011 sq.m.</b>

The following table gives a clear indication of different types of trees available in the college campus.

Common Name	Botanical Name	Family	No. of Plants
Ashok	<i>Polyathia longifolia L.</i>	Annonaceae	15
Amba	<i>Mangifera indica L.</i>	Anacardaceae	2
Pimpal	<i>Ficus religosa L.</i>	Moraceae	1
Sagwan	<i>Tectona grandis L.</i>	Verbenaceae	0
Ritha	<i>Sapindus emarginatus L.</i>	Sapinadaceae	0
Karanji	<i>Pingamia pinnata(L.)pierre</i>	Facaceae	7
Kaduneem	<i>Azadirachta indica L.</i>	Meliaceae	4
Coconut	<i>Cocos nucifera L.</i>	Arecaceae	6
<b>Ficus racemosa</b>	<i>Ficus carica L</i>	Moraceae	1

  
**PRINCIPAL**  
Swami Vivekanand Mahavidyalaya  
Mukramabad Tq. Mukhed. Dist. Nanded



## Total no of Trees, Shrubs, Ornamental Plants in Campus

Sr. No	Type	Total Number
01	Trees	34
02	Shrubs	20
03	Ornamental plant	60



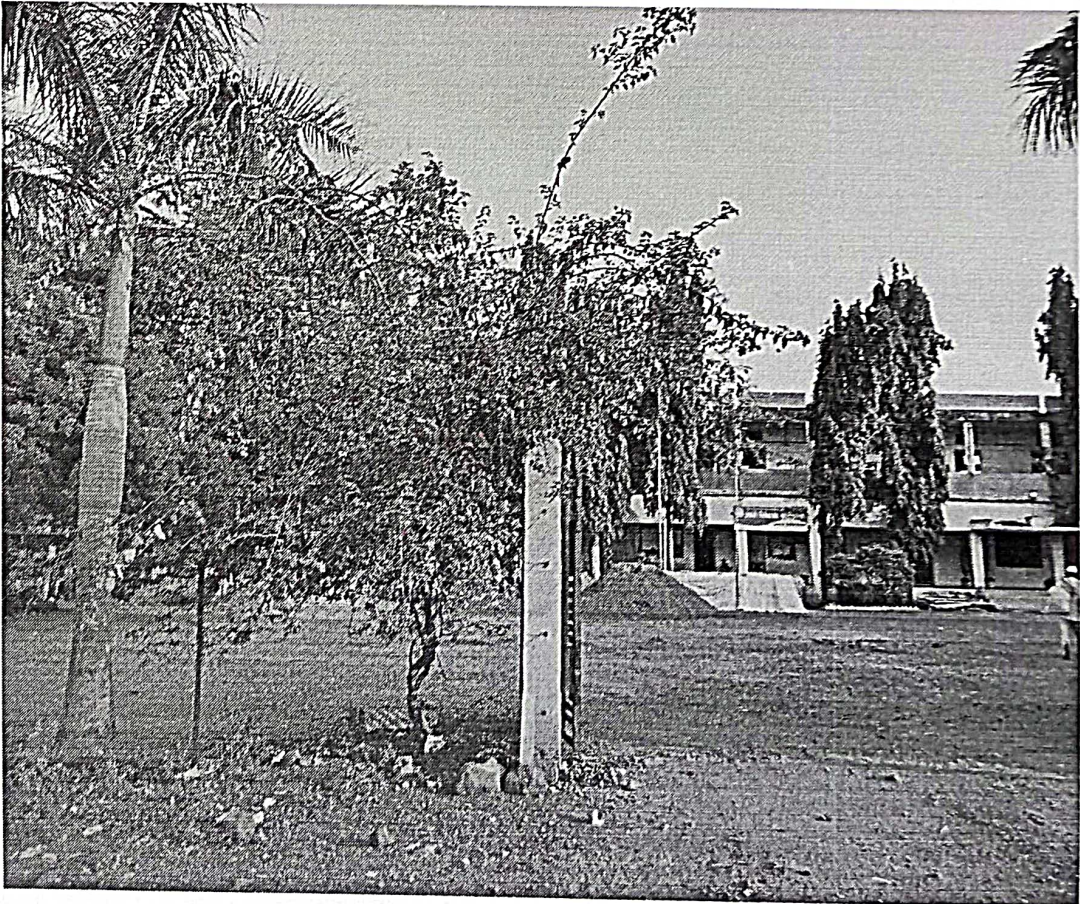
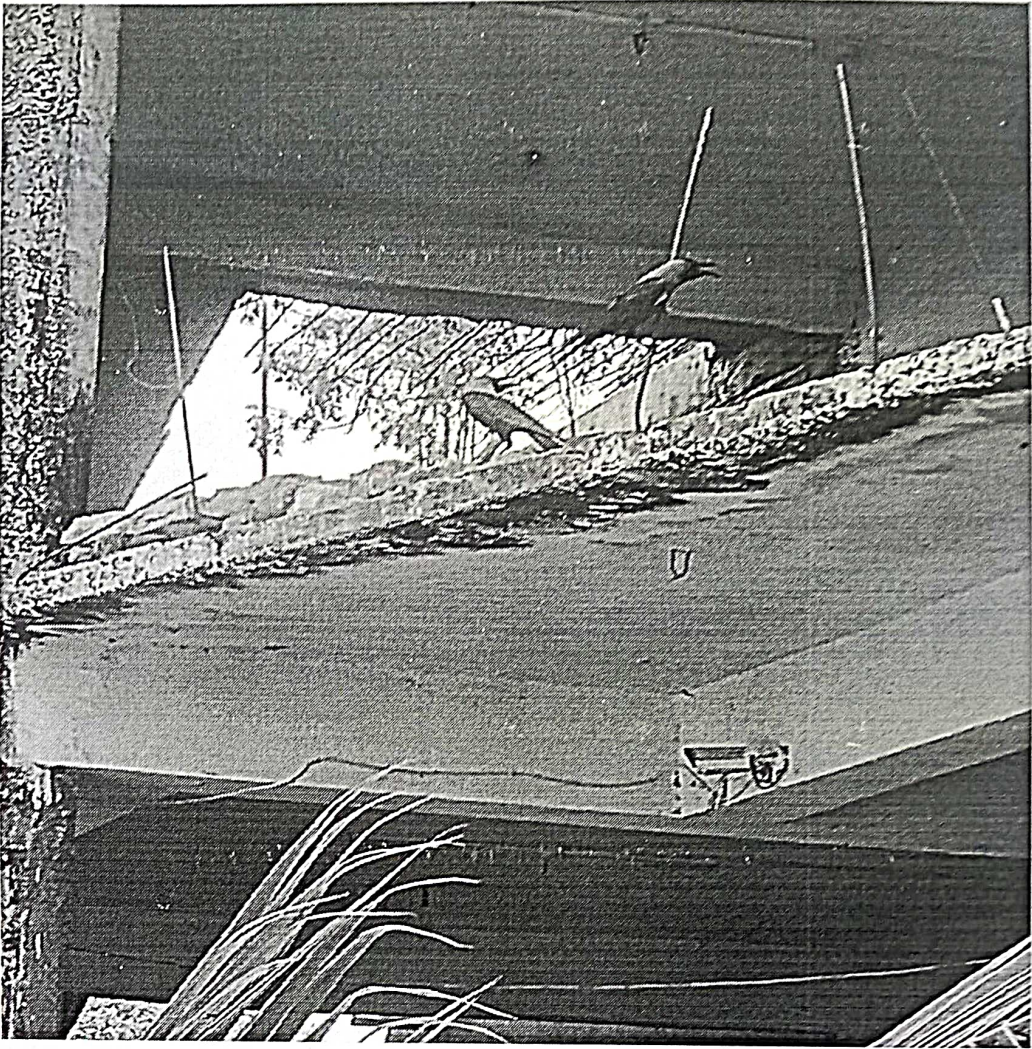
*Prakash*  
PRINCIPAL  
and Mahavidyalaya  
Mukhed, Dist. Nanded

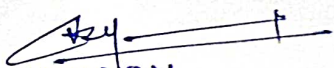


**PRINCIPAL**  
Swami Vivekanand Mahavidyalaya  
Mukramabad Ta. Mukhed. Dist. Nanded



  
**PRINCIPAL**  
Swami Vivekanand Mahavidyalaya  
Mukramabad Ta. Mukhed. Dist. Nanded



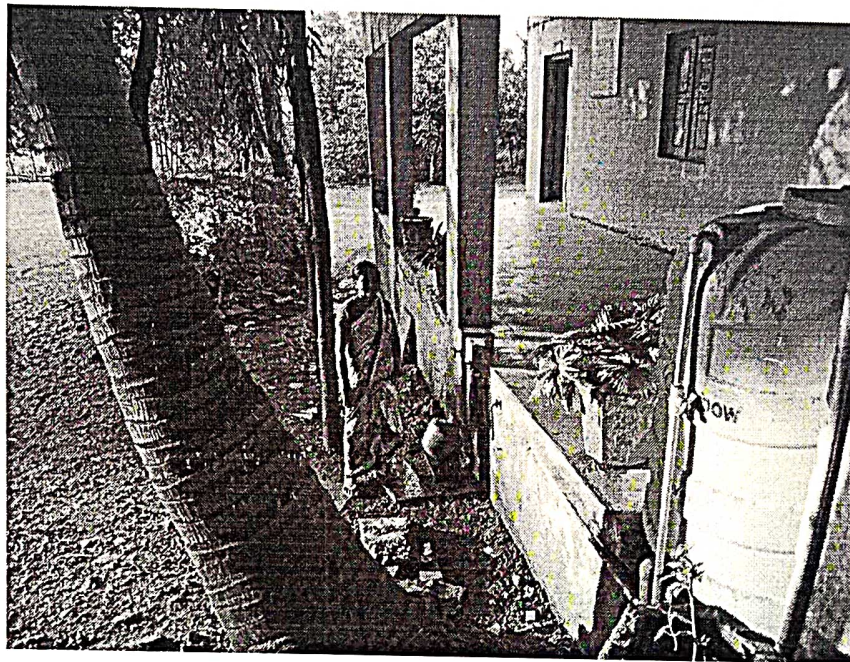
  
**PRINCIPAL**  
Swami Vivekanand Mahavidyalaya  
Mukramabad Ta. Mukhed. Dist. Nanded





## Year wise Water Expenses :

Year	Water Expenses in Rs.
2017-2018	48000/-
2018-2019	58800/-
2019-2020	68000/-
2020-2021	00/-
2021-2022	36000/-




### Conclusion:

An environmental audit is a comprehensive review and assessment of college's environmental performance, including its policies, procedures, and practices. The audit is conducted to identify areas where the organization can improve its environmental impact and comply with regulations.

An environmental audit depends on the scope and depth of the audit, as well as the specific objectives of the audit. However, some common conclusions includes identifying areas of non-compliance with environmental regulations, pinpointing sources of environmental risk or impact and highlighting opportunities for cost savings or operational efficiencies.

Thus, an environmental audit is a comprehensive report that includes specific recommendations for improvement in areas such as waste reduction, pollution prevention, and energy efficiency. By implementing these recommendations, the college demonstrates its commitment to sustainability and reduces their environmental footprint while improving the bottom line.

  
**PRINCIPAL**  
Swami Vivekanand Mahavidyalaya  
Mukramabad Tq. Mukhed. Dist. Nanded



# CERTIFICATE OF ENVIRONMENT AUDIT

NMS/ECOAUDIT/INCUBCEN/2016/04

THIS IS TO CERTIFY THAT  
**SWAMI VIVEKANAND MAHAVIDYALAYA,  
MUKRAMABAD**



HAS SUCCESSFULLY UNDERGONE 'ENVIRONMENT AUDIT' ON 15TH DECEMBER, 2016 TO  
ASSESS THE ECO-FRIENDLY INITIATIVES PLANNING CARRIED OUT THE CAMPUS TO MAINTAIN A  
SUSTAINABLE ENVIRONMENT TO THE STAKEHOLDERS WAS FOUND TO BE EXCELLENT.

**THIS CERTIFICATE IS VALID TILL 15TH DECEMBER, 2021**

  
DR. P.R. KANTHALE


HOD  
BOTANY AND MICROBIOLOGY DEPARTMENT

  
DR. N.S. PADMAVAT

COORDINATOR  
INCUBATION CELL

  
DR. S.S. KULKARNI

PRINCIPAL

  
PRINCIPAL

Swami Vivekanand Mahavidyalaya  
Mukramabad To Mukhed, Dist. Nanded



# CERTIFICATE OF ENVIRONMENT AUDIT

NMS/ECOAUDIT/INCUBCEN/2021/03

THIS IS TO CERTIFY THAT  
**SWAMI VIVEKANAND MAHAVIDYALAYA,  
MUKRAMABAD**

HAS SUCCESSFULLY UNDERGONE 'ENVIRONMENT AUDIT' ON 25TH DECEMBER, 2021 TO  
ASSESS THE ECO-FRIENDLY INITIATIVES PLANNING CARRIED OUT THE CAMPUS TO MAINTAIN A  
SUSTAINABLE ENVIRONMENT TO THE STAKEHOLDERS WAS FOUND TO BE EXCELLENT.

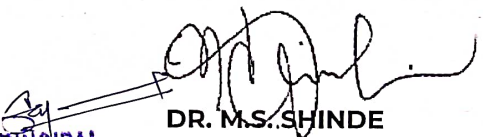
**THIS CERTIFICATE IS VALID TILL 25TH DECEMBER, 2026**

  
DR. P.R. KANTHALE .

HOD  
BOTANY AND MICROBIOLOGY DEPARTMENT

  
DR. M.S. PADMAVAT

COORDINATOR  
INCUBATION CELL

  
PRINCIPAL  
Swami Vivekanand Mahavidyalaya  
Mukramabad Ta. Mukhed. Dist. Nanded

DR. M.S. SHINDE

PRINCIPAL